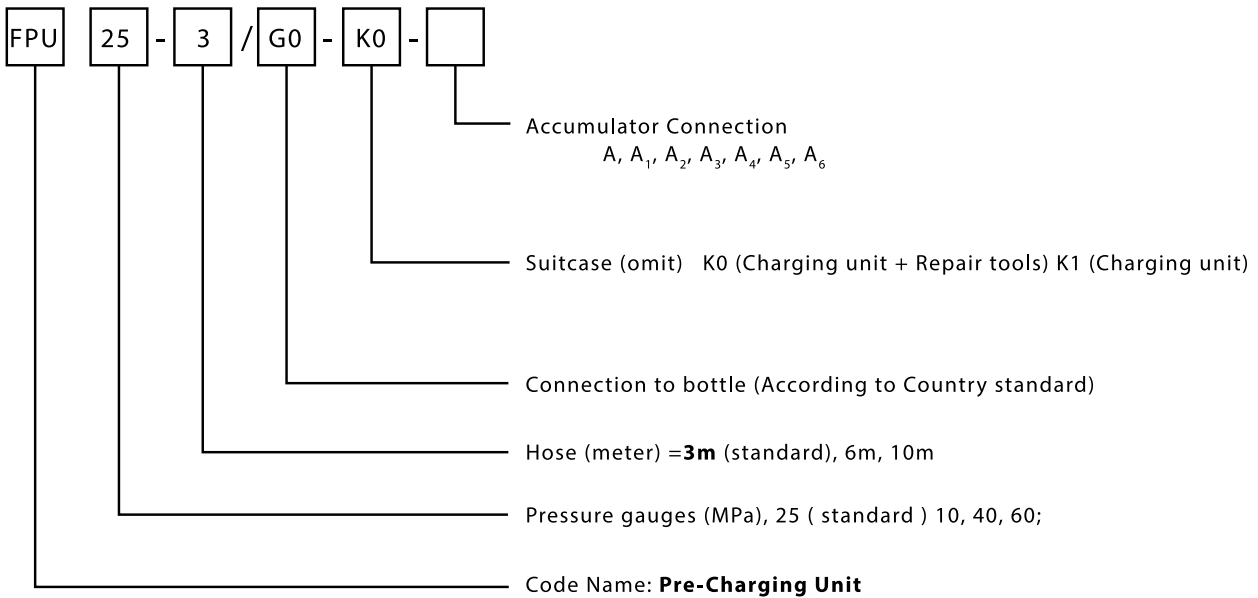


Accessories

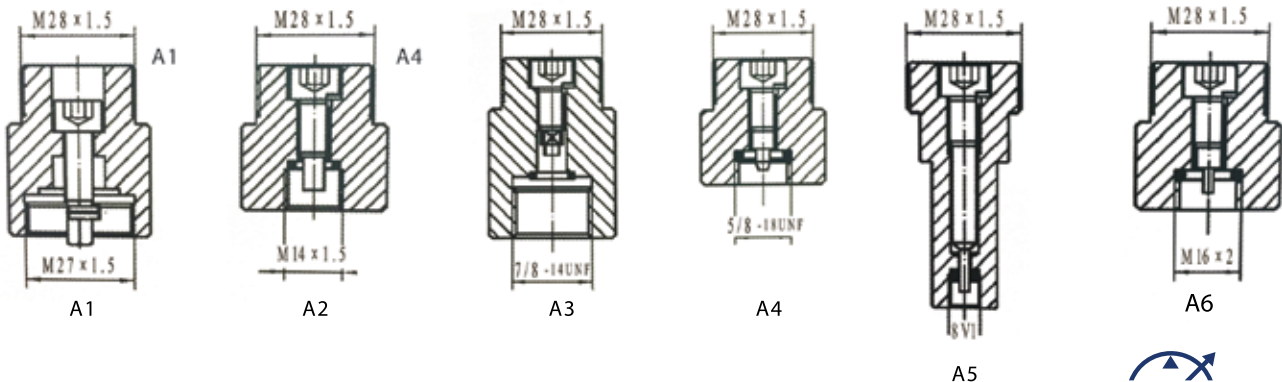
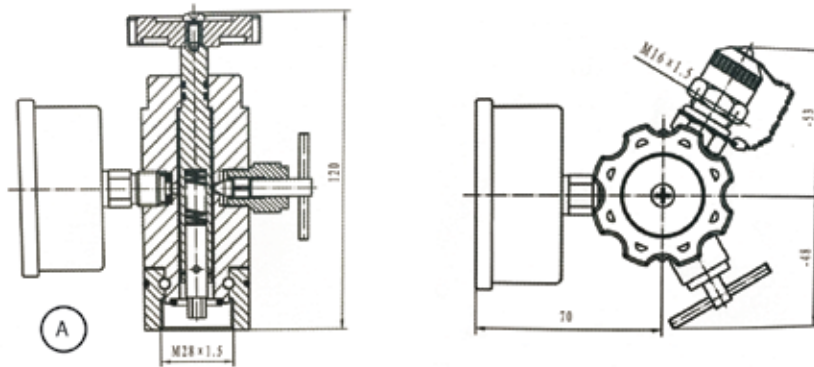
Nitrogen Charge Kit



1. Identification Code



Accumulator Connection

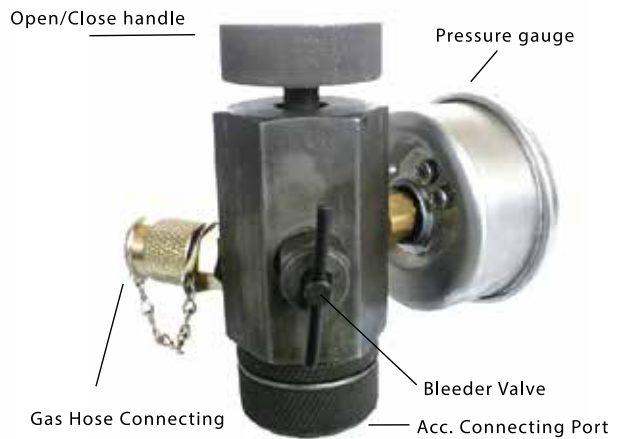


Nitrogen Charge Kit

Operation:

1. Connect hose end to closed nitrogen bottle.
2. Open (counter – clockwise) open / close handle.
3. Close (clockwise) bleeder valve
4. Connect accumulator connecting part to accumulator gas valve
5. Open nitrogen bottle. There will be no flow to accumulator at this stage.
6. Gradually open (clockwise) open / close handle and water gauge. The nitrogen flow can be controlled with this valve.
7. When desired pressure is reached, close open / close handle (counter – clockwise).
8. If nitrogen pressure goes higher than desired pre charge pressure. Open (counter – clockwise) bladder valve whilst watching the gauge, until desired pressure is reached.

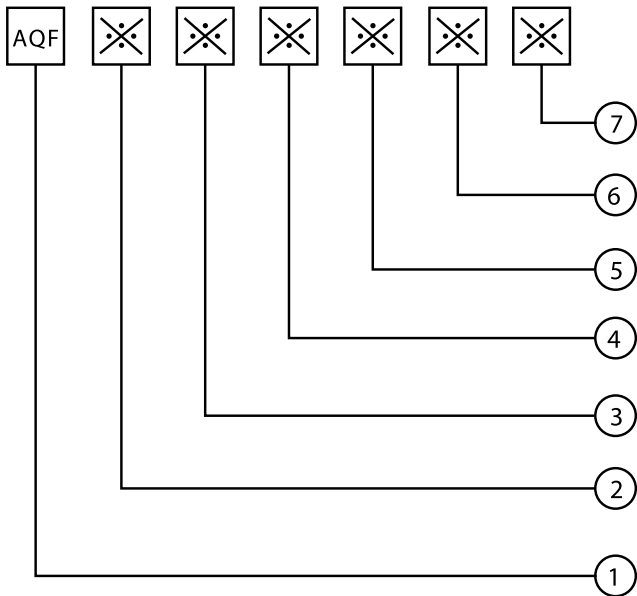
NOTE: Due to expansion of the gases, a cooling effect takes place during pre – charge. It is advised to allow the system to reach room temperature, to check pressure again, as it will rise. Bleed on accordingly.



Type 1: Shut off Valve, Relief Valve and Accumulator Dump Valve

AQF Type accumulator safety valves group

1. Model Code



1. Product Code: AQF Type safety valve group
2. Oil Control : L - (Straight Way).
LS - (Right - Angle Way).
LW - (Three - Way Type).
3. Nominal Bore: 25, 32, 40mm .
4. Pressure Rating: H1 - 10MPa, H2 - 21MPa, H3 - 32MPa.
5. Structures: A - Direct acting relief valve
B - Pilot operated relief valve
6. Accumulator Side : M27 x 2, M42 x 2, M60 x 2, M72 x 2
7. System Side : M33 x 2, M42 x 2, M48 x 2, M52 x 2, M60 x 2

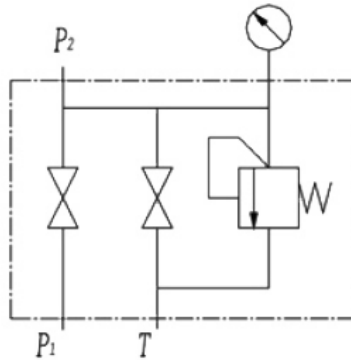
2. The technical data

- (Nominal Pressure) : 10 ~ 31.5MPa.
 (Fluids) : (mineral oil, water and glycol).
 (liquid temperature) : -15 °C ~ +65 °C

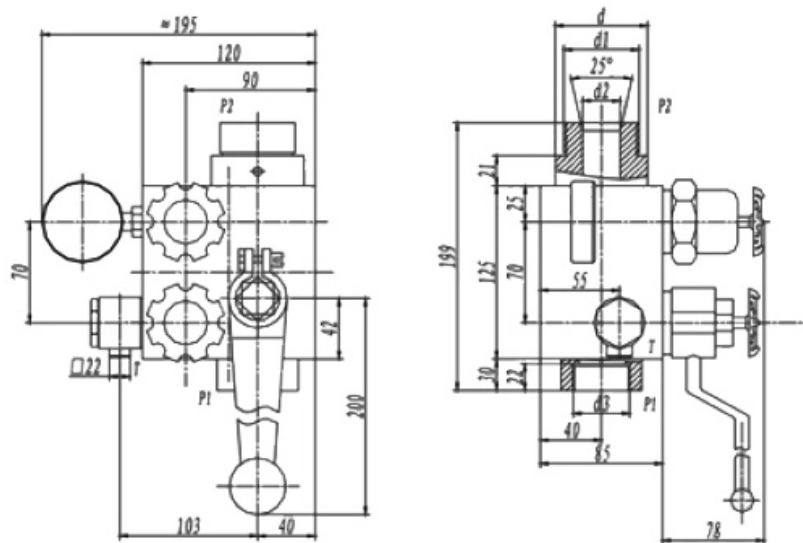
Type 1: Shut off Valve, Relief Valve and Accumulator Dump Valve

AQF Type accumulator safety valves group

3. Circuit Diagram



4. Dimensions

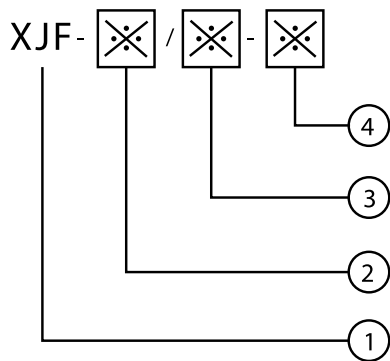


| Model | d | d1 | d2 | d3 |
|-----------------|-----|------------------|-----|------------------|
| AQF -※25※- A -※ | Φ60 | M27 x 2, M42 x 2 | Φ28 | M33 x 2, M42 x 2 |
| AQF -※32※- A -※ | Φ74 | M42 x 2, M60 x 2 | Φ34 | M42 x 2, M52 x 2 |
| AQF -※40※- A -※ | Φ74 | M60 x 2, M72 x 2 | Φ34 | M48 x 2, M60 x 2 |

Type 2: Shut off Valve and Accumulator Dump Valve

XJF type accumulator closing valve

1. Model Code



1. Product Code: XJF Shut Off Valve
2. Nominal Bore: 10, 20, 32, 40, 50mm
3. Outlet Size: 10mm
4. Pressure Range: 10, 20, 31.5 MPa

2. The technical data

(Nominal Pressure) : 10 ~ 31.5MPa.

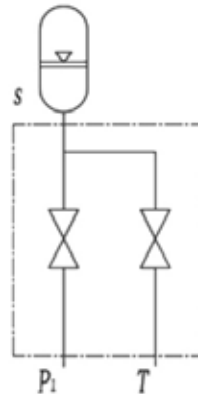
(Fluids) : (mineral oil, water and glycol).

(liquid temperature) : 15°C ~ +65°C

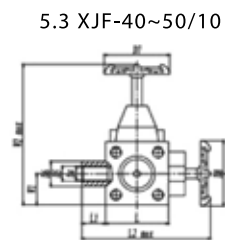
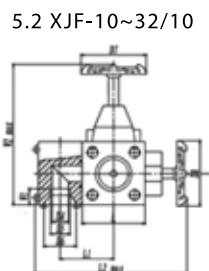
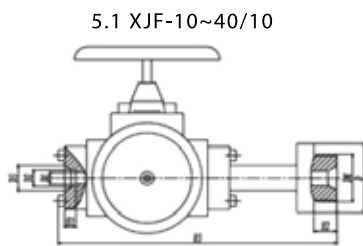
Type 2: Shut off Valve and Accumulator Dump Valve

XJF type accumulator closing valve

3. Circuit Diagram



4. Dimensions

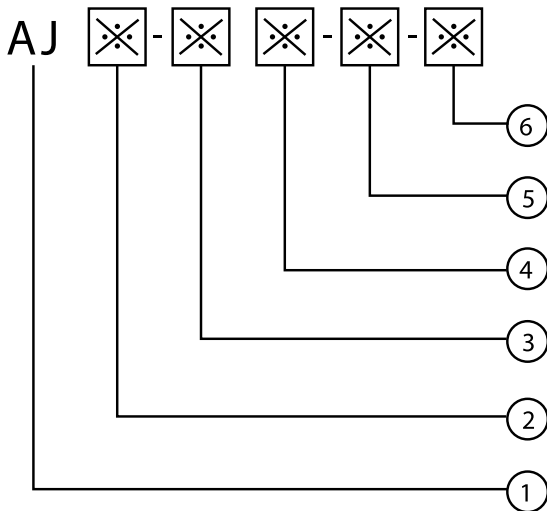


| Model | (mm) | (Mpa) | (mm) | Basic Size (mm) | | | | | | | | |
|-----------|-----------------|------------------|------|-----------------|-----------|-----|-----|-----|---------|------|-----|----|
| | | | | L | L1 | L2 | W1 | W2 | H1 | H2 | H3 | D |
| XJF-10/10 | 10 | 10 20 31.5 | 10 | 58 | 44 | 163 | 10 | 170 | 10 | 20 | 236 | 60 |
| XJF-20/10 | 20 | | | 58 | 44 | 163 | 10 | 170 | 10 | 20 | 236 | 60 |
| XJF-32/10 | 32 | | | 76 | 53 | 190 | 12 | 225 | 16 | 25 | 325 | 80 |
| XJF-40/10 | 40 | | | 92 | 8 | 207 | 46 | 250 | 18 | 25 | 349 | 80 |
| XJF-50/10 | 50 | | | 100 | 10 | 210 | 50 | 280 | 20 | 38 | 380 | 90 |
| Model | Basic Size (mm) | | | | | | | | | (kg) | | |
| | D1 | D2 | D3 | D4 | D5 | D6 | D7 | D8 | DM | | | |
| XJF-10/10 | 10 | 17.8 | 38 | 12 | 18 | 24 | 125 | 92 | M42 x 2 | 7 | | |
| XJF-20/10 | 20 | 28.5 | 38 | 12 | 18 | 24 | 125 | 92 | M42 x 2 | 7 | | |
| XJF-32/10 | 32 | 43 | 55 | 12 | 18 | 24 | 155 | 107 | M60 x 2 | 13 | | |
| XJF-40/10 | 40 | 51 | 62 | 12 | M22 x 1.5 | 40 | 155 | 107 | M60 x 2 | 16 | | |
| XJF-50/10 | 50 | 61 | 65 | 12 | M22 x 1.5 | 40 | 155 | 107 | M72 x 2 | 25 | | |

Type 3: Shut off Valve, Relief Valve and Accumulator Dump Valve with Solenoid Option

AJ TYPE accumulator safety valve group

1. Model Code



1. Product Code: AJ Type safety valve group
2. Unloading Mode: S - Standard manual
D - With normally closed positive sealing solenoid valve
3. Nominal Bore: 10, 20, 32mm
4. Safety Pressure Range: H1 - 16MPa, H2 - 25MPa, H3 - 32MPa
5. Structures: A - Direct acting relief valve
B - Pilot operated relief valve
6. Accumulator Side : M27 x 2, M42 x 2, M60 x 2, M72 x 2

2. The technical data

(Nominal Pressure) : 10 ~ 31.5MPa.

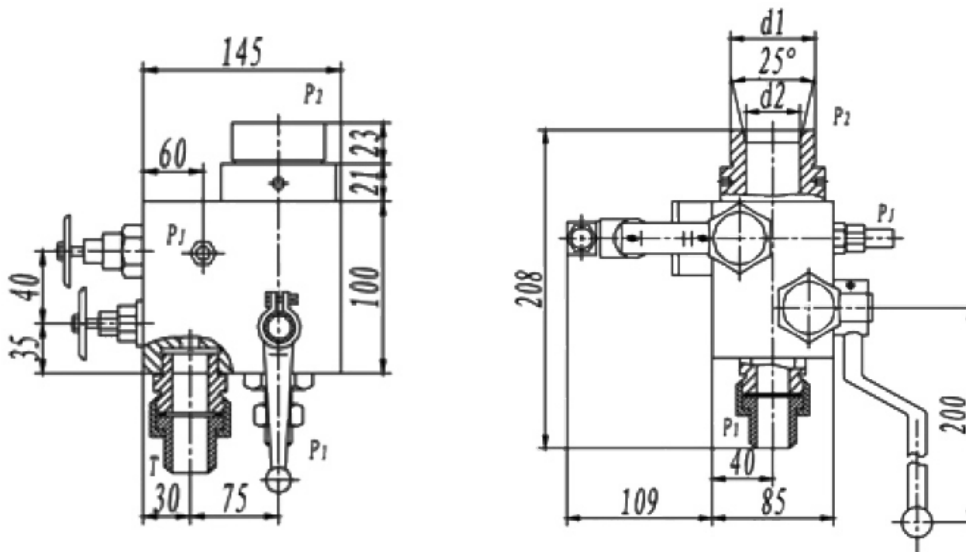
(Fluids) : (mineral oil, water and glycol).

(liquid temperature) : -15°C ~ +65°C

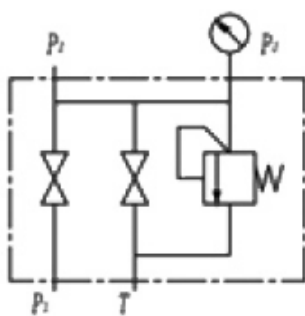
Type 3: Shut off Valve, Relief Valve and Accumulator Dump Valve with Solenoid Option

AJ TYPE accumulator safety valve group

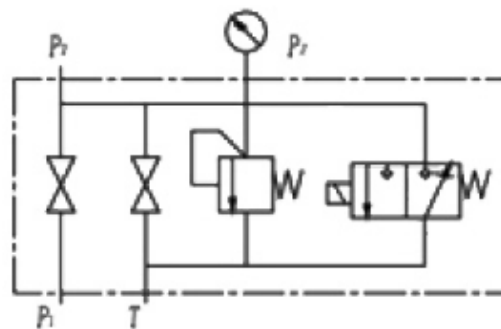
3. Dimensions



Circuit Diagrams



MODEL: AJ S - *** -A



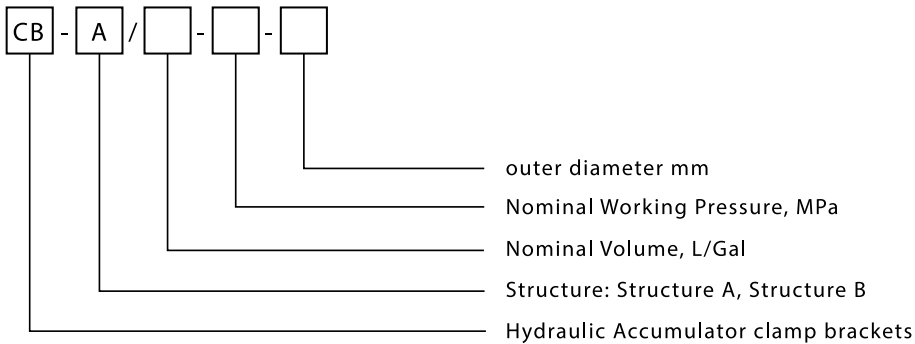
MODEL: AJ D - *** -A

| Model | d1 | d2 | P1□ | T □ | PJ □ |
|-------------|------------------|------|----------|----------|----------|
| AJ*-10*-A-* | M27 x 2, M42 x 2 | Φ 28 | JB209918 | JB209914 | JB209910 |
| AJ*-20*-A-* | M42 x 2, M60 x 2 | Φ 34 | JB209928 | JB209928 | JB209910 |
| AJ*-32*-A-* | M60 x 2, M72 x 2 | Φ 34 | JB209942 | JB209928 | JB209910 |

Mounting accessories

1. clamp brackets

1.1. Model Code

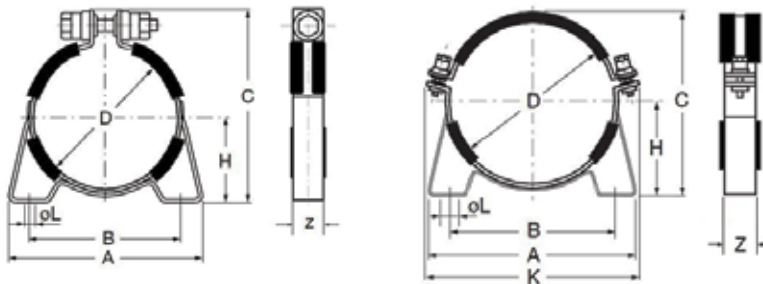


For a clamp bracket with type B structure and outer diameter of 229mm, it should be expressed as CBB-229.

1.2 Structure

The clamp bracket is made from zinc-plated carbon steel, and it can also be manufactured by stainless steel if requested.

In addition, the support ring is fabricated by rubber.



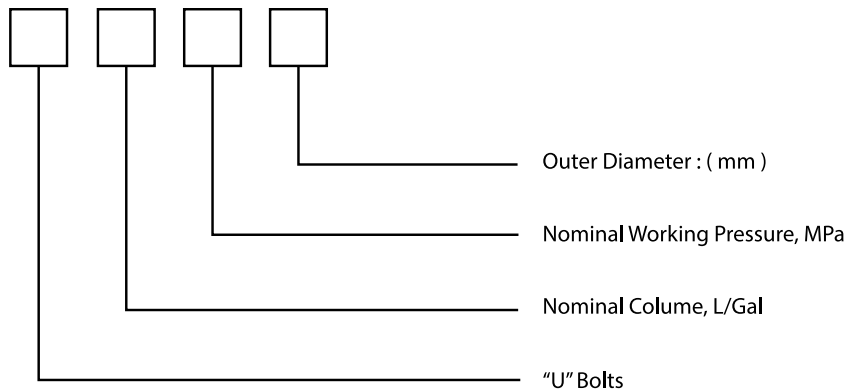
| Model | Dimensions (mm) | | | | | | | | Weight (kg) |
|---------|-----------------|---------|-----|------|-----|------|----|-----|-------------|
| | A | B | C | D | H | ΦL | Z | K | |
| CBA-89 | 118 | 90 | 122 | 89 | 53 | 9 | 30 | — | 0.4 |
| CBA-114 | 140 | 110 | 150 | 114 | 70 | 9 | 30 | — | 0.5 |
| CBA-121 | 150 | 116 | 155 | 121 | 70 | 9 | 30 | — | 0.6 |
| CBA-152 | 182 | 152 | 195 | 152 | 92 | 9 | 30 | — | 0.8 |
| CBA-168 | 182 | 152 | 200 | 168 | 92 | 9 | 30 | — | 0.9 |
| CBB-220 | 261 | 216~180 | 240 | 2h20 | 119 | 12.5 | 30 | 305 | 1.3 |
| CBB-219 | 270 | 216 | 240 | 219 | 123 | 15 | 40 | 285 | 1.7 |
| CBB-229 | 270 | 216 | 245 | 229 | 123 | 15 | 40 | 295 | 1.7 |
| CBB-245 | 270 | 216 | 270 | 245 | 136 | 15 | 40 | 312 | 1.8 |
| CBB-299 | 332 | 280 | 314 | 299 | 159 | 15 | 40 | 360 | 2.1 |

clamp brackets

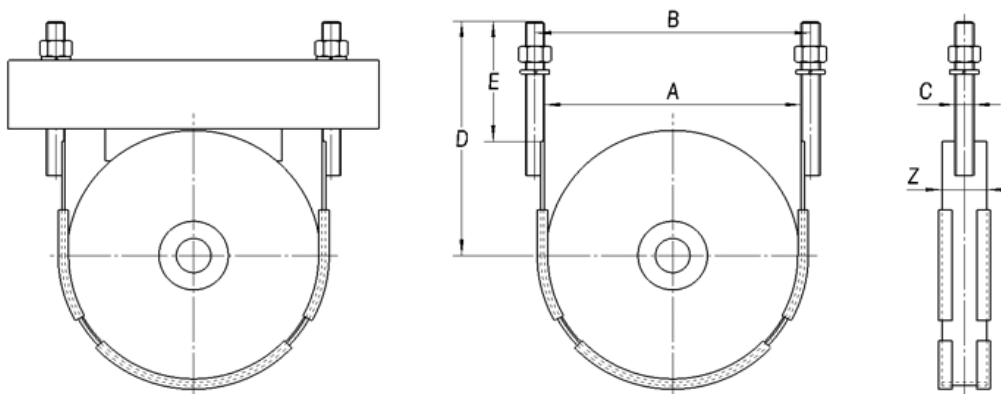
Mounting accessories

2. "U" bolts

2.1. Model Code



For a bolt with outer diameter of 219mm, it is named UN-219



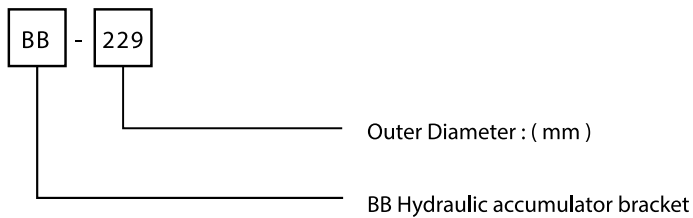
"U" Bolts

| Model | Dimensions (mm) | | | | | | Wt. (Kg) |
|--------|-----------------|-----|-----|-----|-----|----|----------|
| | A | B | C | D | E | Z | |
| UB-89 | 92 | 102 | M10 | 92 | 50 | 30 | 0.28 |
| UB-114 | 118 | 128 | M10 | 110 | 50 | 30 | 0.38 |
| UB-152 | 154 | 164 | M10 | 142 | 70 | 30 | 0.46 |
| UB-168 | 170 | 180 | M10 | 150 | 70 | 30 | 0.49 |
| UB-219 | 222 | 238 | M16 | 205 | 100 | 40 | 1.12 |
| UB-229 | 232 | 248 | M16 | 210 | 100 | 40 | 1.14 |
| UB-245 | 248 | 264 | M16 | 217 | 100 | 40 | 1.18 |
| UB-299 | 302 | 318 | M16 | 265 | 120 | 40 | 1.42 |
| UB-351 | 354 | 370 | M16 | 290 | 120 | 40 | 1.55 |

Mounting accessories

3. BASE BRACKETS ASSEMBLY

3.1. Model Code



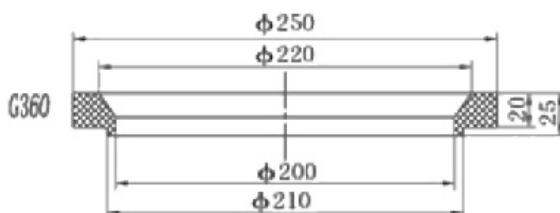
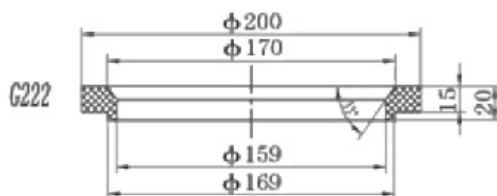
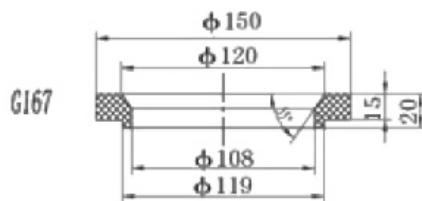
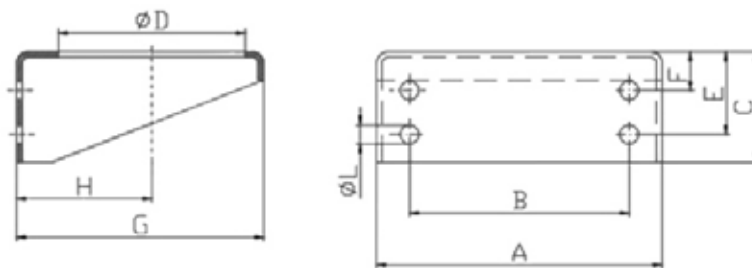
Example:

229mm, BB - 229

Outer diameter 229mm, the Base Bracket Assembly code is BB - 229.

This product is mainly used to support accumulators to avoid sliding if they are installed vertically.

3.2. Type and Dimensions



clamp brackets
Mounting accessories

3. BASE BRACKETS ASSEMBLY

| Model | Dimensions (mm) | | | | | | | | | Weight (kg) |
|--------|-----------------|-----|-----|-----|----|----|-----|-----|----|-------------|
| | A | B | C | D | E | F | G | H | ΦL | |
| UB-114 | 140 | 90 | 60 | 70 | 30 | 18 | 140 | 70 | 11 | 0.9 |
| UB-168 | 180 | 120 | 80 | 120 | 40 | 20 | 175 | 92 | 14 | 1.3 |
| UB-220 | 240 | 180 | 100 | 168 | 40 | 30 | 240 | 119 | 14 | 2.8 |
| UB-229 | 260 | 200 | 100 | 168 | 40 | 30 | 225 | 123 | 14 | 2.9 |
| UB-245 | 260 | 200 | 120 | 168 | 60 | 30 | 250 | 136 | 17 | 4.4 |
| UB-299 | 320 | 220 | 140 | 210 | 70 | 35 | 310 | 159 | 22 | 7.9 |
| UB-351 | 320 | 220 | 140 | 210 | 70 | 35 | 310 | 178 | 22 | 8 |

Bladder and Piston accumulator Mounting Accessories

| | | CB | | | |
|-------|-----|---------|--------|--------|-------|
| φ 89 | | CBA-89 | UB-89 | — | — |
| φ 114 | 100 | CBA-114 | UB-114 | BB-114 | — |
| | | CBA-121 | UB-114 | BB-114 | — |
| φ 152 | 140 | CBA-152 | UB152 | BB168 | G 167 |
| φ 168 | | CBA-168 | UB-168 | BB168 | G 167 |
| φ 219 | 180 | CBB-220 | UB-219 | BB-220 | G222 |
| | | CBB-219 | | BB-229 | G222 |
| φ 229 | | CBB-229 | UB-229 | BB-229 | G222 |
| φ 245 | 210 | CBB-245 | UB-245 | BB-245 | G222 |
| φ 299 | 250 | CBB-299 | UB-299 | BB-299 | G360 |
| φ 351 | | — | UB-351 | BB-351 | G360 |